

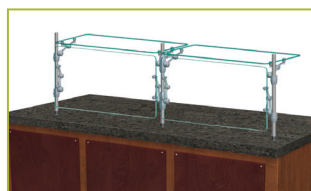
QUICK REFERENCE GUIDE



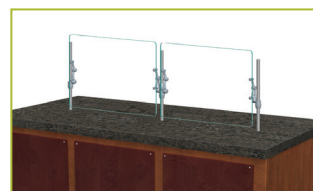
XG3500



XG3500-2



XG3500-3



XG3500-4



XG3500-5



XG3500-6



XG3560



XG3600



XG3900



XG3915



XG3930



XG3930-2



XG3930-3



XG3930-5



XG3935



XG3945



XG3945-3



XG3950



XG3950-2

GENERAL INFORMATION

Project Name: _____

STANDARD NSF LISTED FINISH OPTIONS

- | | |
|---|--|
| <input type="checkbox"/> Brushed Aluminum | <input type="checkbox"/> Chrome |
| <input type="checkbox"/> Gloss Black | <input type="checkbox"/> Wrinkle Black |
| <input type="checkbox"/> Smoked Copper | <input type="checkbox"/> Polished Brass Finish |
| <input type="checkbox"/> Other _____ | |

GLASS THICKNESS

- ☐ 1/4" Tempered Glass (not for shelves)
Centerline Max 54"
- ☐ 3/8" Tempered Glass (for shelf or span more than 54") Centerline Max 66"
- ☐ 1/2" Tempered Glass (for shelf or span more than 66") Centerline Max 72"

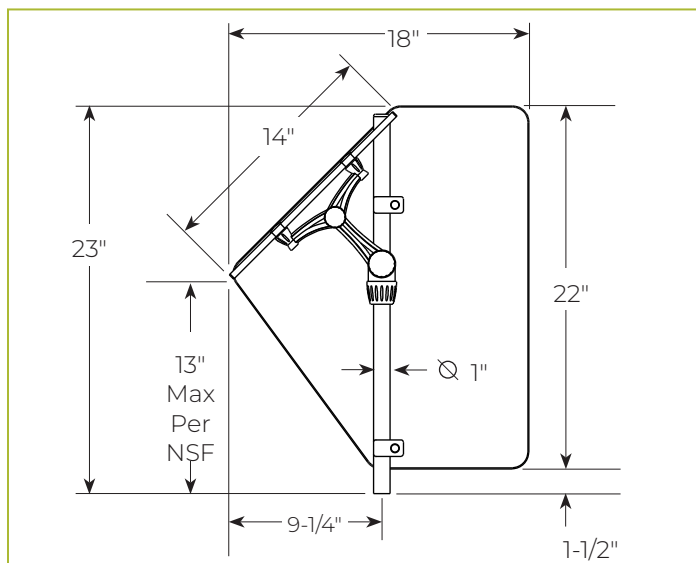
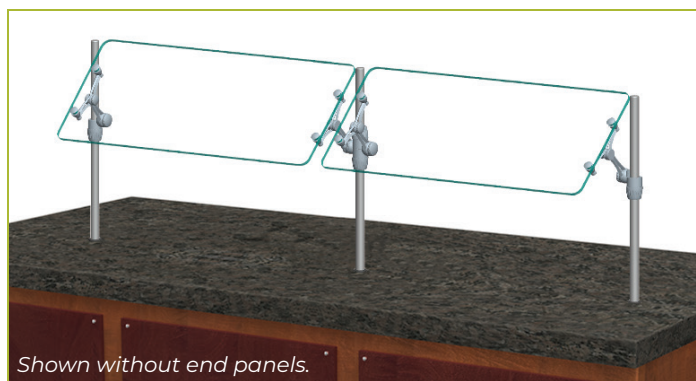
GLASS CORNERS

- | | |
|--|---|
| <input type="checkbox"/> 1" Radius Corner (standard) | <input type="checkbox"/> Square Corners |
|--|---|

INSTALLATION OPTIONS

Above Counter: Stainless Steel Counter	<input type="checkbox"/> SS1: EZ Mount 2" x 8" Flange
Under Counter: Stainless Steel Counter (Requires Under Counter Reinforcement & Access)	<input type="checkbox"/> SSU3-H: Heavy-Duty Flange
	<input type="checkbox"/> SSU3-N: Narrow Flange
	<input type="checkbox"/> SSU5-H: Heavy-Duty Flange
	<input type="checkbox"/> SSU5-N: Narrow Flange
Above-Counter: Millwork Counter	<input type="checkbox"/> MW1: Heavy-Duty Flange
	<input type="checkbox"/> MW2: Narrow Flange
Under-Counter: Millwork Counter	<input type="checkbox"/> MWU3: Narrow Flange
	<input type="checkbox"/> MWU4: Compression Installation (not recommended for solid surfaces)
	<input type="checkbox"/> MWU5: Heavy-Duty Flange

XG3500 Combo Serve



To meet NSF guidelines, end panels are included on all BSI quotations unless specifically excluded. (See End Panel Page for More Details.)

GENERAL INFORMATION

Project Name: _____

STANDARD NSF LISTED FINISH OPTIONS

- | | |
|---|--|
| <input type="checkbox"/> Brushed Aluminum | <input type="checkbox"/> Chrome |
| <input type="checkbox"/> Gloss Black | <input type="checkbox"/> Wrinkle Black |
| <input type="checkbox"/> Smoked Copper | <input type="checkbox"/> Polished Brass Finish |
| <input type="checkbox"/> Other _____ | |

GLASS THICKNESS

- ☐ 1/4" Tempered Glass (not for shelves)
Centerline Max 54"
- ☐ 3/8" Tempered Glass (for shelf or span more than 54") Centerline Max 66"
- ☐ 1/2" Tempered Glass (for shelf or span more than 66") Centerline Max 72"

GLASS CORNERS

- | | |
|--|---|
| <input type="checkbox"/> 1" Radius Corner (standard) | <input type="checkbox"/> Square Corners |
|--|---|

INSTALLATION OPTIONS

Above Counter: Stainless Steel Counter

Under Counter: Stainless Steel Counter
(Requires Under Counter Reinforcement & Access)

Above-Counter: Millwork Counter

Under-Counter: Millwork Counter

☐ SS1: EZ Mount 2" x 8" Flange

☐ SSU3-H: Heavy-Duty Flange

☐ SSU3-N: Narrow Flange

☐ SSU5-H: Heavy-Duty Flange

☐ SSU5-N: Narrow Flange

☐ MW1: Heavy-Duty Flange

☐ MW2: Narrow Flange

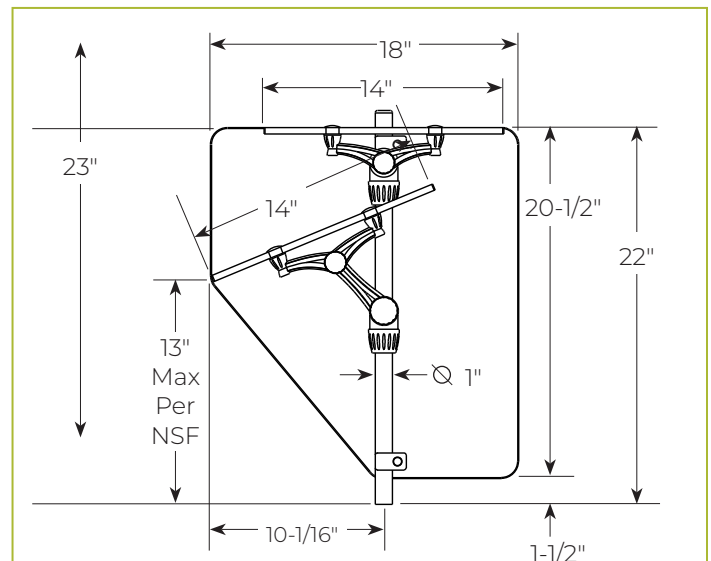
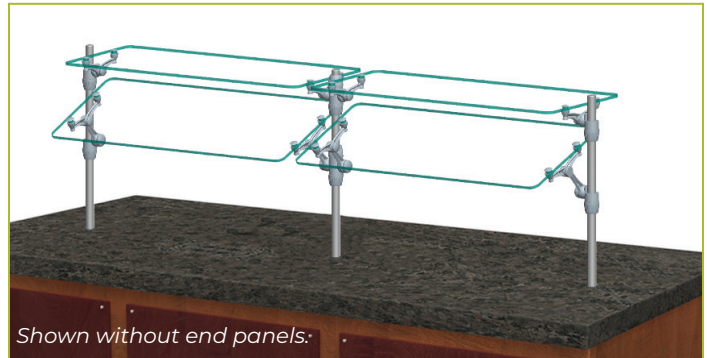
☐ MWU3: Narrow Flange

☐ MWU4: Compression Installation
(not recommended for solid surfaces)

☐ MWU5: Heavy-Duty Flange

XG3500-2

Self-Serve w/Top Shelf or
Two-Tier Display Shelf



To meet NSF guidelines, end panels are included on all BSI quotations unless specifically excluded. (See End Panel Page for More Details.)

GENERAL INFORMATION

Project Name: _____

STANDARD NSF LISTED FINISH OPTIONS

- ☐ Brushed Aluminum
- ☐ Chrome
- ☐ Gloss Black
- ☐ Wrinkle Black
- ☐ Smoked Copper
- ☐ Polished Brass Finish
- ☐ Other _____

GLASS THICKNESS

- ☐ 1/4" Tempered Glass (not for shelves)
Centerline Max 54"
- ☐ 3/8" Tempered Glass (for shelf or span more
than 54") Centerline Max 66"
- ☐ 1/2" Tempered Glass (for shelf or span more than
66") Centerline Max 72"

GLASS CORNERS

- ☐ 1" Radius Corner
(standard)
- ☐ Square Corners

INSTALLATION OPTIONS

Above Counter: Stainless Steel Counter

Under Counter: Stainless Steel Counter

(Requires Under Counter Reinforcement
& Access)

Above-Counter: Millwork Counter

Under-Counter: Millwork Counter

☐ SS1: EZ Mount 2" x 8" Flange

☐ SSU3-H: Heavy-Duty Flange

☐ SSU3-N: Narrow Flange

☐ SSU5-H: Heavy-Duty Flange

☐ SSU5-N: Narrow Flange

☐ MW1: Heavy-Duty Flange

☐ MW2: Narrow Flange

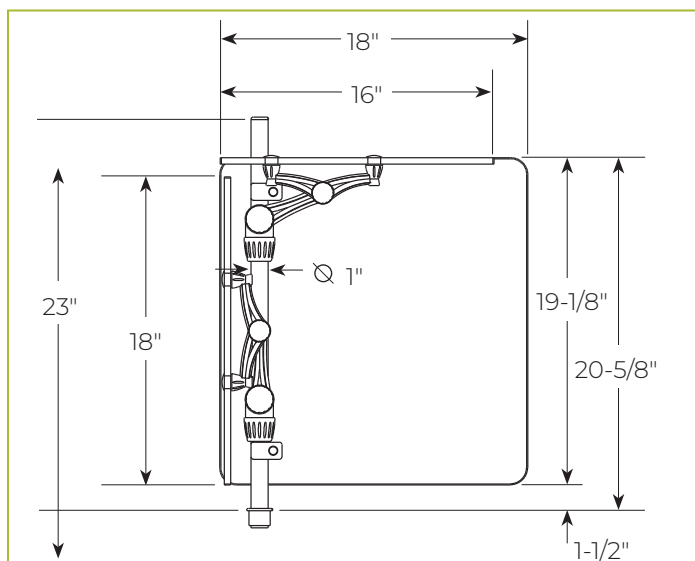
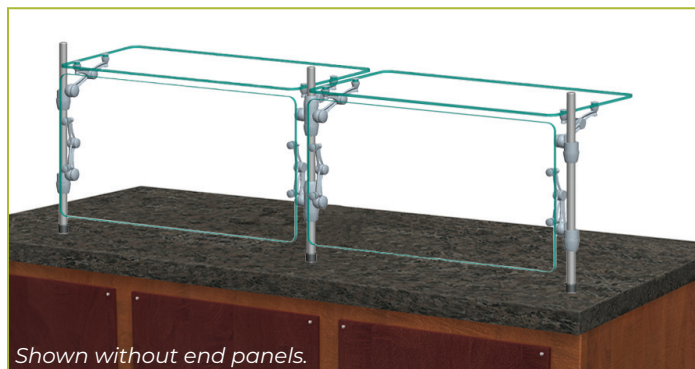
☐ MWU3: Narrow Flange

☐ MWU4: Compression Installation
(not recommended for solid surfaces)

☐ MWU5: Heavy-Duty Flange

XG3500-3

Operator-Serve w/Offset Service Shelf



To meet NSF guidelines, end panels are included on all BSI quotations unless specifically excluded. (See End Panel Page for More Details.)

GENERAL INFORMATION

Project Name: _____

STANDARD NSF LISTED FINISH OPTIONS

- | | |
|---|--|
| <input type="checkbox"/> Brushed Aluminum | <input type="checkbox"/> Chrome |
| <input type="checkbox"/> Gloss Black | <input type="checkbox"/> Wrinkle Black |
| <input type="checkbox"/> Smoked Copper | <input type="checkbox"/> Polished Brass Finish |
| <input type="checkbox"/> Other _____ | |

GLASS THICKNESS

- ☐ 1/4" Tempered Glass (not for shelves)
Centerline Max 54"
- ☐ 3/8" Tempered Glass (for shelf or span more than 54") Centerline Max 66"
- ☐ 1/2" Tempered Glass (for shelf or span more than 66") Centerline Max 72"

GLASS CORNERS

- | | |
|---|---|
| <input type="checkbox"/> 1" Radius Corner
(standard) | <input type="checkbox"/> Square Corners |
|---|---|

INSTALLATION OPTIONS

Above Counter: Stainless Steel Counter

Under Counter: Stainless Steel Counter

(Requires Under Counter Reinforcement & Access)

Above-Counter: Millwork Counter

Under-Counter: Millwork Counter

☐ SS1: EZ Mount 2" x 8" Flange

☐ SSU3-H: Heavy-Duty Flange

☐ SSU3-N: Narrow Flange

☐ SSU5-H: Heavy-Duty Flange

☐ SSU5-N: Narrow Flange

☐ MW1: Heavy-Duty Flange

☐ MW2: Narrow Flange

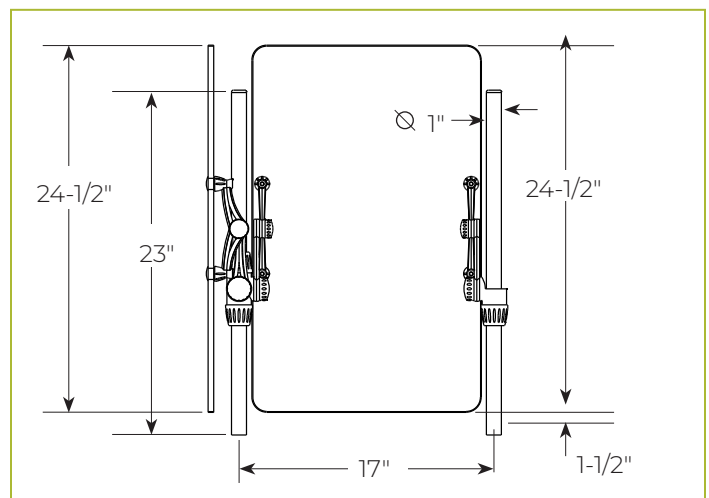
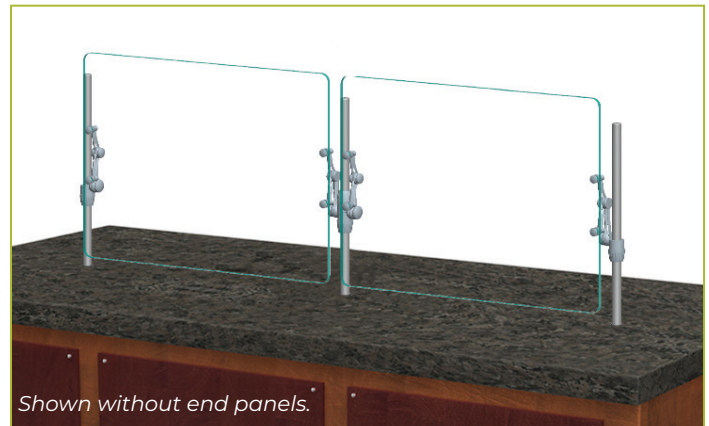
☐ MWU3: Narrow Flange

☐ MWU4: Compression Installation
(not recommended for solid surfaces)

☐ MWU5: Heavy-Duty Flange

XG3500-4

Operator-Serve and/or Partition



To meet NSF guidelines, end panels are included on all BSI quotations unless specifically excluded. (See End Panel Page for More Details.)

GENERAL INFORMATION

Project Name: _____

STANDARD NSF LISTED FINISH OPTIONS

- | | |
|---|--|
| <input type="checkbox"/> Brushed Aluminum | <input type="checkbox"/> Chrome |
| <input type="checkbox"/> Gloss Black | <input type="checkbox"/> Wrinkle Black |
| <input type="checkbox"/> Smoked Copper | <input type="checkbox"/> Polished Brass Finish |
| <input type="checkbox"/> Other _____ | |

GLASS THICKNESS

- ☐ 1/4" Tempered Glass (not for shelves)
Centerline Max 54"
- ☐ 3/8" Tempered Glass (for shelf or span more than 54") Centerline Max 66"
- ☐ 1/2" Tempered Glass (for shelf or span more than 66") Centerline Max 72"

GLASS CORNERS

- | | |
|--|---|
| <input type="checkbox"/> 1" Radius Corner (standard) | <input type="checkbox"/> Square Corners |
|--|---|

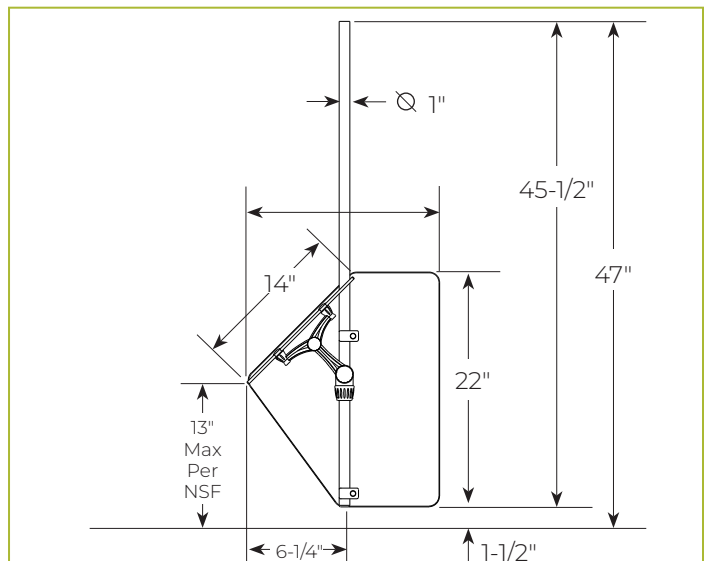
INSTALLATION OPTIONS

Mounting Method

Contact factory for optional mounting methods.

- ☐ MW1: Heavy-Duty Flange

XG3500-5 Ceiling Mount



To meet NSF guidelines, end panels are included on all BSI quotations unless specifically excluded. (See End Panel Page for More Details.)

GENERAL INFORMATION

Project Name: _____

STANDARD NSF LISTED FINISH OPTIONS

- | | |
|---|--|
| <input type="checkbox"/> Brushed Aluminum | <input type="checkbox"/> Chrome |
| <input type="checkbox"/> Gloss Black | <input type="checkbox"/> Wrinkle Black |
| <input type="checkbox"/> Smoked Copper | <input type="checkbox"/> Polished Brass Finish |
| <input type="checkbox"/> Other _____ | |

GLASS THICKNESS

- ☐ 1/4" Tempered Glass (not for shelves)
Centerline Max 54"
- ☐ 3/8" Tempered Glass (for shelf or span more than 54") Centerline Max 66"
- ☐ 1/2" Tempered Glass (for shelf or span more than 66") Centerline Max 72"

GLASS CORNERS

- | | |
|---|---|
| <input type="checkbox"/> 1" Radius Corner
(standard) | <input type="checkbox"/> Square Corners |
|---|---|

INSTALLATION OPTIONS

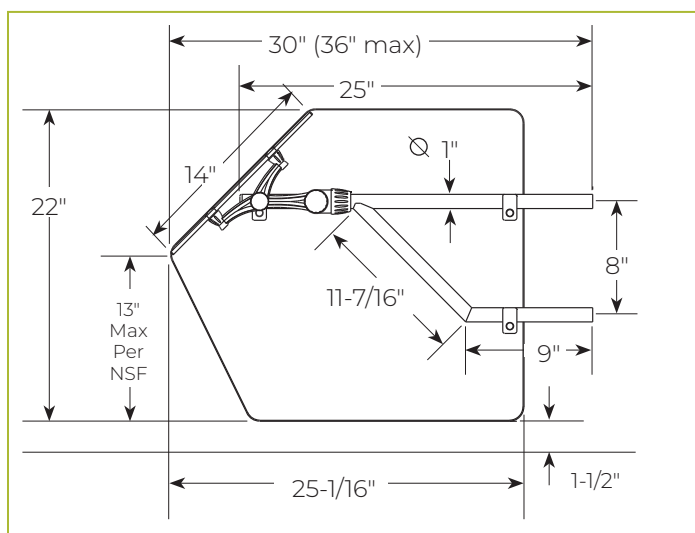
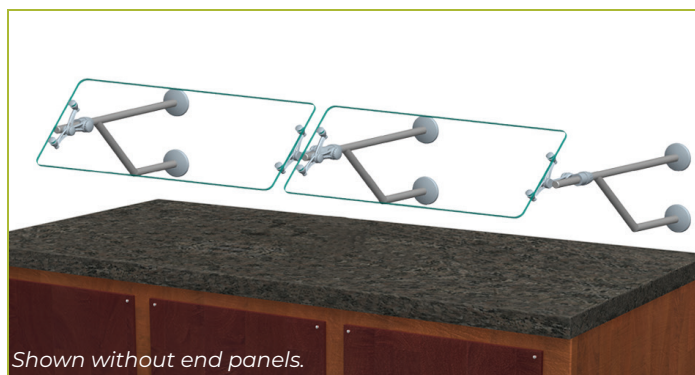
Mounting Method

Contact factory for optional mounting methods.

- ☐ MW1: Heavy-Duty Flange

XG3500-6

Wall Mount



To meet NSF guidelines, end panels are included on all BSI quotations unless specifically excluded. (See End Panel Page for More Details.)

GENERAL INFORMATION

Project Name: _____

STANDARD NSF LISTED FINISH OPTIONS

- ☐ Brushed Aluminum
- ☐ Chrome
- ☐ Gloss Black
- ☐ Wrinkle Black
- ☐ Smoked Copper
- ☐ Polished Brass Finish
- ☐ Other _____

GLASS THICKNESS

- ☐ 1/4" Tempered Glass (not for shelves)
Centerline Max 54"
- ☐ 3/8" Tempered Glass (for shelf or span more
than 54") Centerline Max 66"
- ☐ 1/2" Tempered Glass (for shelf or span more than
66") Centerline Max 72"

GLASS CORNERS

- ☐ 1" Radius Corner
(standard)
- ☐ Square Corners

INSTALLATION OPTIONS

Above Counter: Stainless Steel Counter

Under Counter: Stainless Steel Counter

(Requires Under Counter Reinforcement
& Access)

Above-Counter: Millwork Counter

Under-Counter: Millwork Counter

☐ SS1: EZ Mount 2" x 8" Flange

☐ SSU3-H: Heavy-Duty Flange

☐ SSU3-N: Narrow Flange

☐ SSU5-H: Heavy-Duty Flange

☐ SSU5-N: Narrow Flange

☐ MW1: Heavy-Duty Flange

☐ MW2: Narrow Flange

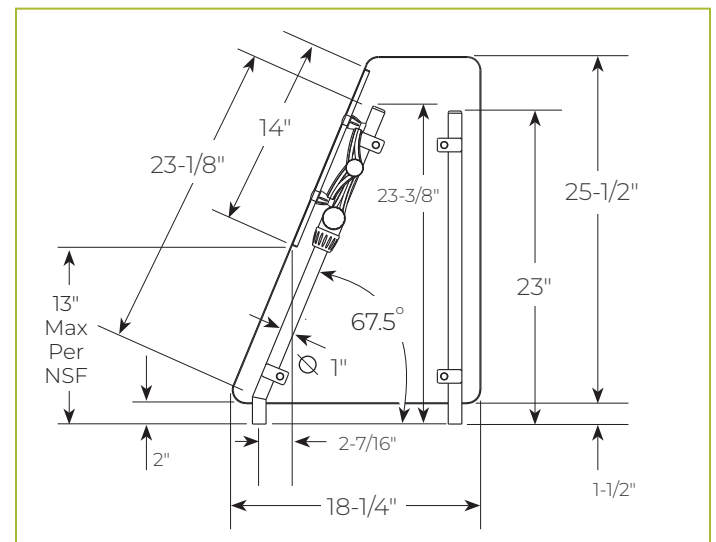
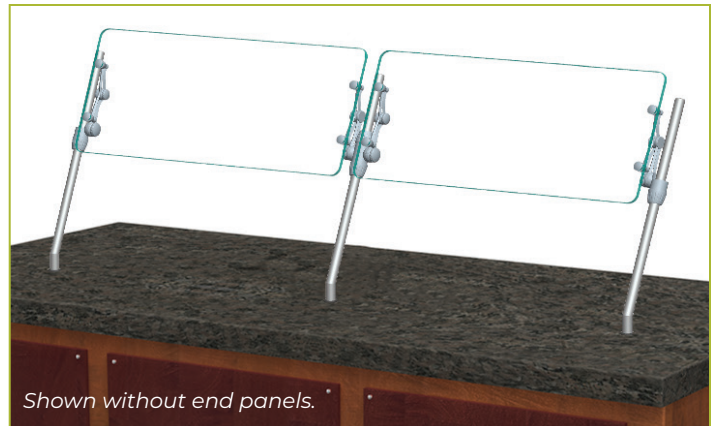
☐ MWU3: Narrow Flange

☐ MWU4: Compression Installation
(not recommended for solid surfaces)

☐ MWU5: Heavy-Duty Flange

XG3560

Front Counter Installation



To meet NSF guidelines, end panels are included on all BSI quotations unless specifically excluded. (See End Panel Page for More Details.)

GENERAL INFORMATION

Project Name: _____

STANDARD NSF LISTED FINISH OPTIONS

- | | |
|---|--|
| <input type="checkbox"/> Brushed Aluminum | <input type="checkbox"/> Chrome |
| <input type="checkbox"/> Gloss Black | <input type="checkbox"/> Wrinkle Black |
| <input type="checkbox"/> Smoked Copper | <input type="checkbox"/> Polished Brass Finish |
| <input type="checkbox"/> Other _____ | |

GLASS THICKNESS

- ☐ 1/4" Tempered Glass (not for shelves)
Centerline Max 54"
- ☐ 3/8" Tempered Glass (for shelf or span more than 54") Centerline Max 66"
- ☐ 1/2" Tempered Glass (for shelf or span more than 66") Centerline Max 72"

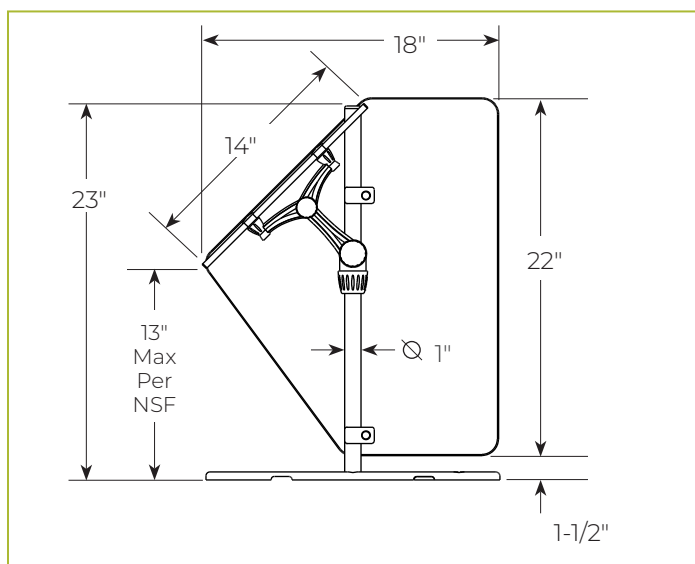
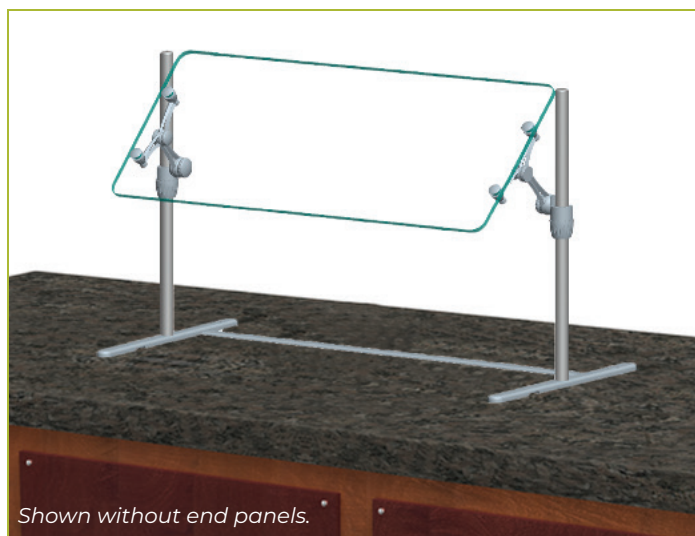
GLASS CORNERS

- | | |
|---|---|
| <input type="checkbox"/> 1" Radius Corner
(standard) | <input type="checkbox"/> Square Corners |
|---|---|

For overall dimension greater than 47" please call BSI.

XG3600

Portable Market Guard



To meet NSF guidelines, end panels are included on all BSI quotations unless specifically excluded. (See End Panel Page for More Details.)

GENERAL INFORMATION

Project Name: _____

STANDARD NSF LISTED FINISH OPTIONS

- | | |
|---|--|
| <input type="checkbox"/> Brushed Aluminum | <input type="checkbox"/> Chrome |
| <input type="checkbox"/> Gloss Black | <input type="checkbox"/> Wrinkle Black |
| <input type="checkbox"/> Smoked Copper | <input type="checkbox"/> Polished Brass Finish |
| <input type="checkbox"/> Other _____ | |

GLASS THICKNESS

- ☐ 1/4" Tempered Glass (not for shelves)
Centerline Max 54"
- ☐ 3/8" Tempered Glass (for shelf or span more than 54") Centerline Max 66"
- ☐ 1/2" Tempered Glass (for shelf or span more than 66") Centerline Max 72"

GLASS CORNERS

- | | |
|---|---|
| <input type="checkbox"/> 1" Radius Corner
(standard) | <input type="checkbox"/> Square Corners |
|---|---|

LIGHT OPTIONS

- | | |
|-------------------------------|--------------------|
| <input type="checkbox"/> 2580 | Slimline LED Light |
|-------------------------------|--------------------|

For warmers contact BSI factory.

All BSI light units are UL Listed. See light spec sheets for detailed information. Also available with other manufacturers' light units. Contact BSI for details.

INSTALLATION OPTIONS

Above Counter: Stainless Steel Counter

Under Counter: Stainless Steel Counter

(Requires Under Counter Reinforcement & Access)

Above-Counter: Millwork Counter

Under-Counter: Millwork Counter

☐ SSI: EZ Mount 2" x 8" Flange

☐ SSU3-H: Heavy-Duty Flange

☐ SSU3-N: Narrow Flange

☐ SSU5-H: Heavy-Duty Flange

☐ SSU5-N: Narrow Flange

☐ MW1: Heavy-Duty Flange

☐ MW2: Narrow Flange

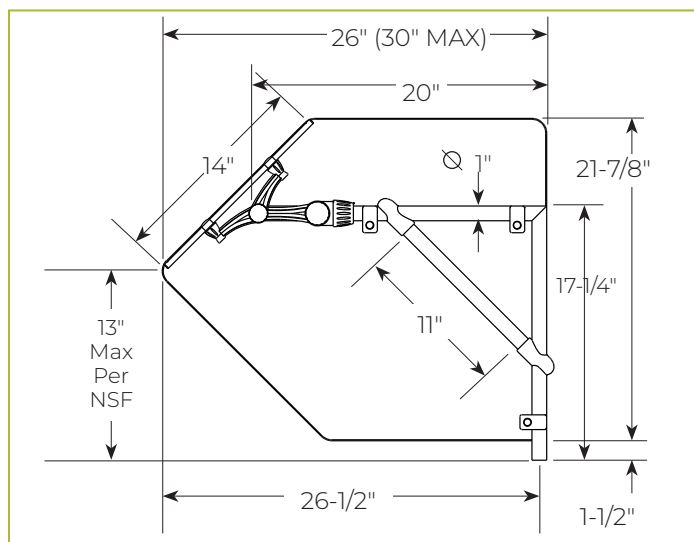
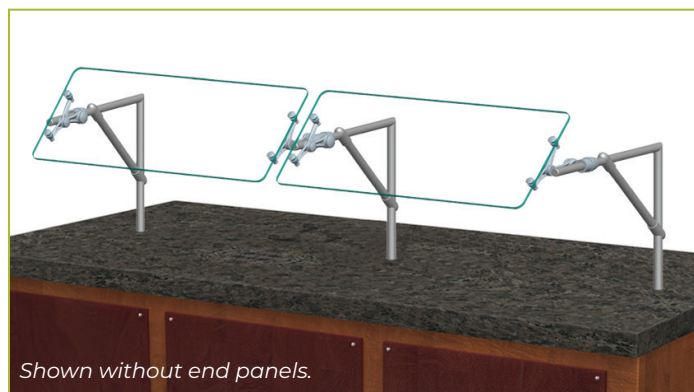
☐ MWU3: Narrow Flange

☐ MWU4: Compression Installation
(not recommended for solid surfaces)

☐ MWU5: Heavy-Duty Flange

XG3900

Cantilever Self-Serve



To meet NSF guidelines, end panels are included on all BSI quotations unless specifically excluded. (See End Panel Page for More Details.)

GENERAL INFORMATION

Project Name: _____

STANDARD NSF LISTED FINISH OPTIONS

- | | |
|---|--|
| <input type="checkbox"/> Brushed Aluminum | <input type="checkbox"/> Chrome |
| <input type="checkbox"/> Gloss Black | <input type="checkbox"/> Wrinkle Black |
| <input type="checkbox"/> Smoked Copper | <input type="checkbox"/> Polished Brass Finish |
| <input type="checkbox"/> Other _____ | |

GLASS THICKNESS

- ☐ 1/4" Tempered Glass (not for shelves)
Centerline Max 54"
- ☐ 3/8" Tempered Glass (for shelf or span more than 54") Centerline Max 66"
- ☐ 1/2" Tempered Glass (for shelf or span more than 66") Centerline Max 72"

GLASS CORNERS

- | | |
|---|---|
| <input type="checkbox"/> 1" Radius Corner
(standard) | <input type="checkbox"/> Square Corners |
|---|---|

LIGHT OPTIONS

- | | |
|-------------------------------|--------------------|
| <input type="checkbox"/> 2580 | Slimline LED Light |
|-------------------------------|--------------------|

For warmers contact BSI factory.

All BSI light units are UL Listed. See light spec sheets for detailed information. Also available with other manufacturers' light units. Contact BSI for details.

INSTALLATION OPTIONS

Above Counter: Stainless Steel Counter

Under Counter: Stainless Steel Counter

(Requires Under Counter Reinforcement & Access)

Above-Counter: Millwork Counter

Under-Counter: Millwork Counter

☐ SS1: EZ Mount 2" x 8" Flange

☐ SSU3-H: Heavy-Duty Flange

☐ SSU3-N: Narrow Flange

☐ SSU5-H: Heavy-Duty Flange

☐ SSU5-N: Narrow Flange

☐ MW1: Heavy-Duty Flange

☐ MW2: Narrow Flange

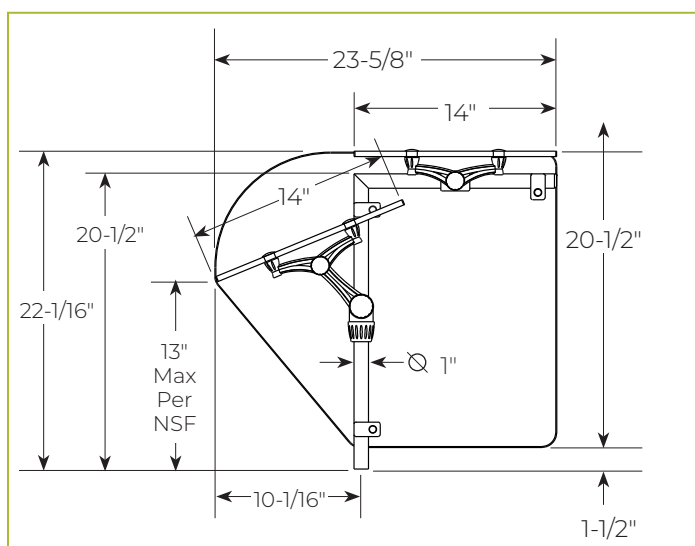
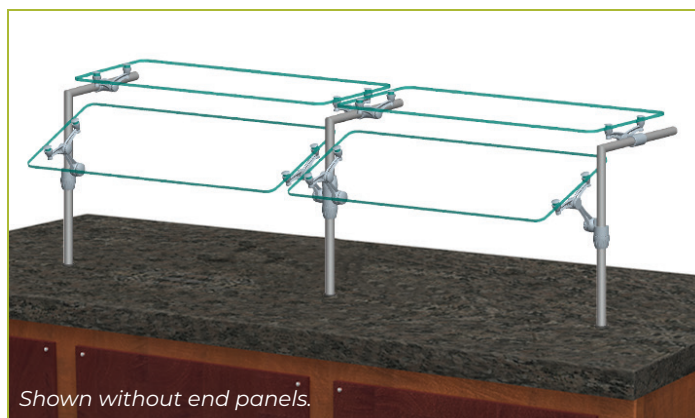
☐ MWU3: Narrow Flange

☐ MWU4: Compression Installation
(not recommended for solid surfaces)

☐ MWU5: Heavy-Duty Flange

XG3915

Combo Serve



To meet NSF guidelines, end panels are included on all BSI quotations unless specifically excluded. (See End Panel Page for More Details.)

GENERAL INFORMATION

Project Name: _____

STANDARD NSF LISTED FINISH OPTIONS

- ☐ Brushed Aluminum
- ☐ Chrome
- ☐ Gloss Black
- ☐ Wrinkle Black
- ☐ Smoked Copper
- ☐ Polished Brass Finish
- ☐ Other _____

GLASS THICKNESS

- ☐ 1/4" Tempered Glass (not for shelves)
Centerline Max 54"
- ☐ 3/8" Tempered Glass (for shelf or span more than 54") Centerline Max 66"
- ☐ 1/2" Tempered Glass (for shelf or span more than 66") Centerline Max 72"

GLASS CORNERS

- ☐ 1" Radius Corner (standard)
- ☐ Square Corners

LIGHT OPTIONS

- ☐ 2580 Slimline LED Light
- ☐ 790 Stealth Warmer
- ☐ 705 Stealth Light & Warmer
- ☐ 500 Stealth Heat/Light/Heat Combo

All BSI light and warmer units are UL Listed. See light spec sheets for detailed information. Also available with other manufacturers' light units. Contact BSI for details.

INSTALLATION OPTIONS

Above Counter: Stainless Steel Counter

Under Counter: Stainless Steel Counter

(Requires Under Counter Reinforcement & Access)

Above-Counter: Millwork Counter

Under-Counter: Millwork Counter

☐ SS1: EZ Mount 2" x 8" Flange

☐ SSU3-H: Heavy-Duty Flange

☐ SSU3-N: Narrow Flange

☐ SSU5-H: Heavy-Duty Flange

☐ SSU5-N: Narrow Flange

☐ MW1: Heavy-Duty Flange

☐ MW2: Narrow Flange

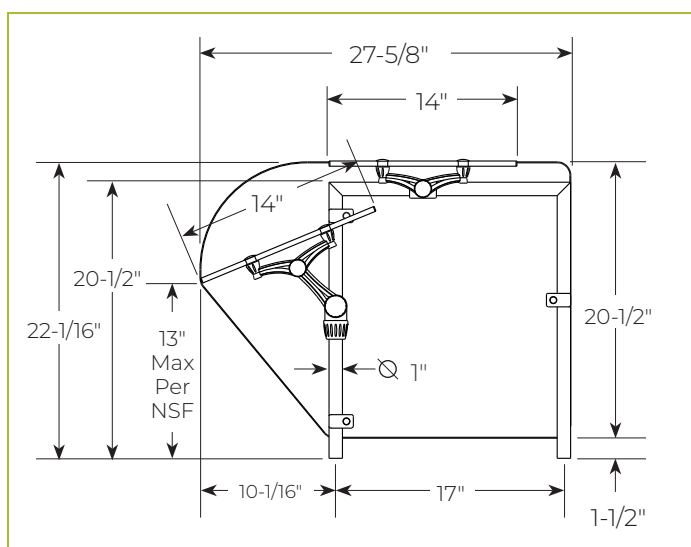
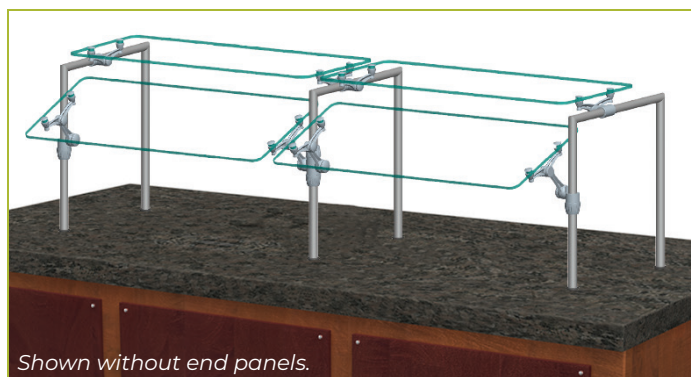
☐ MWU3: Narrow Flange

☐ MWU4: Compression Installation
(not recommended for solid surfaces)

☐ MWU5: Heavy-Duty Flange

XG3930

Single-Sided w/Top Shelf



To meet NSF guidelines, end panels are included on all BSI quotations unless specifically excluded. (See End Panel Page for More Details.)

GENERAL INFORMATION

Project Name: _____

STANDARD NSF LISTED FINISH OPTIONS

- ☐ Brushed Aluminum
- ☐ Chrome
- ☐ Gloss Black
- ☐ Wrinkle Black
- ☐ Smoked Copper
- ☐ Polished Brass Finish
- ☐ Other _____

GLASS THICKNESS

- ☐ 1/4" Tempered Glass (not for shelves)
Centerline Max 54"
- ☐ 3/8" Tempered Glass (for shelf or span more than 54") Centerline Max 66"
- ☐ 1/2" Tempered Glass (for shelf or span more than 66") Centerline Max 72"

GLASS CORNERS

- ☐ 1" Radius Corner (standard)
- ☐ Square Corners

LIGHT OPTIONS

- ☐ 2580 Slimline LED Light
- ☐ 790 Stealth Warmer
- ☐ 705 Stealth Light & Warmer
- ☐ 500 Stealth Heat/Light/Heat Combo

All BSI light and warmer units are UL Listed. See light spec sheets for detailed information. Also available with other manufacturers' light units. Contact BSI for details.

INSTALLATION OPTIONS

Above Counter: Stainless Steel Counter

Under Counter: Stainless Steel Counter

(Requires Under Counter Reinforcement & Access)

Above-Counter: Millwork Counter

Under-Counter: Millwork Counter

☐ SS1: EZ Mount 2" x 8" Flange

☐ SSU3-H: Heavy-Duty Flange

☐ SSU3-N: Narrow Flange

☐ SSU5-H: Heavy-Duty Flange

☐ SSU5-N: Narrow Flange

☐ MW1: Heavy-Duty Flange

☐ MW2: Narrow Flange

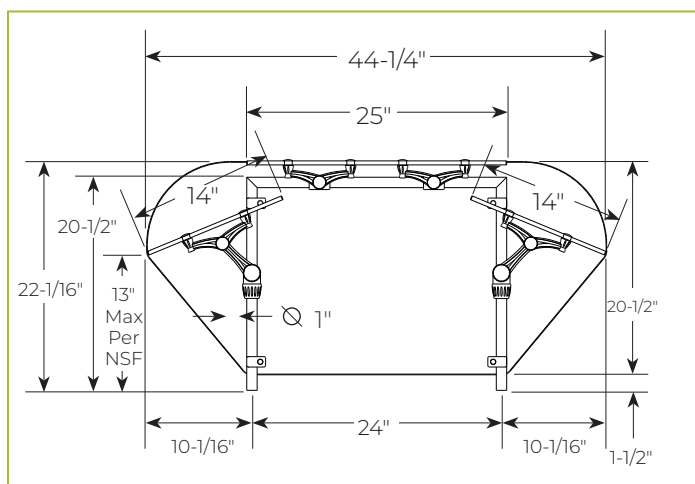
☐ MWU3: Narrow Flange

☐ MWU4: Compression Installation
(not recommended for solid surfaces)

☐ MWU5: Heavy-Duty Flange

XG3930-2

Double-Sided w/Top Shelf



To meet NSF guidelines, end panels are included on all BSI quotations unless specifically excluded. (See End Panel Page for More Details.)

GENERAL INFORMATION

Project Name: _____

STANDARD NSF LISTED FINISH OPTIONS

- ☐ Brushed Aluminum
- ☐ Chrome
- ☐ Gloss Black
- ☐ Wrinkle Black
- ☐ Smoked Copper
- ☐ Polished Brass Finish
- ☐ Other _____

GLASS THICKNESS

- ☐ 1/4" Tempered Glass (not for shelves)
Centerline Max 54"
- ☐ 3/8" Tempered Glass (for shelf or span more than 54") Centerline Max 66"
- ☐ 1/2" Tempered Glass (for shelf or span more than 66") Centerline Max 72"

GLASS CORNERS

- ☐ 1" Radius Corner (standard)
- ☐ Square Corners

LIGHT OPTIONS

- ☐ 2580 Slimline LED Light
- ☐ 790 Stealth Warmer
- ☐ 705 Stealth Light & Warmer
- ☐ 500 Stealth Heat/Light/Heat Combo

All BSI light and warmer units are UL Listed. See light spec sheets for detailed information. Also available with other manufacturers' light units. Contact BSI for details.

INSTALLATION OPTIONS

Above Counter: Stainless Steel Counter

Under Counter: Stainless Steel Counter

(Requires Under Counter Reinforcement & Access)

Above-Counter: Millwork Counter

Under-Counter: Millwork Counter

☐ SS1: EZ Mount 2" x 8" Flange

☐ SSU3-H: Heavy-Duty Flange

☐ SSU3-N: Narrow Flange

☐ SSU5-H: Heavy-Duty Flange

☐ SSU5-N: Narrow Flange

☐ MW1: Heavy-Duty Flange

☐ MW2: Narrow Flange

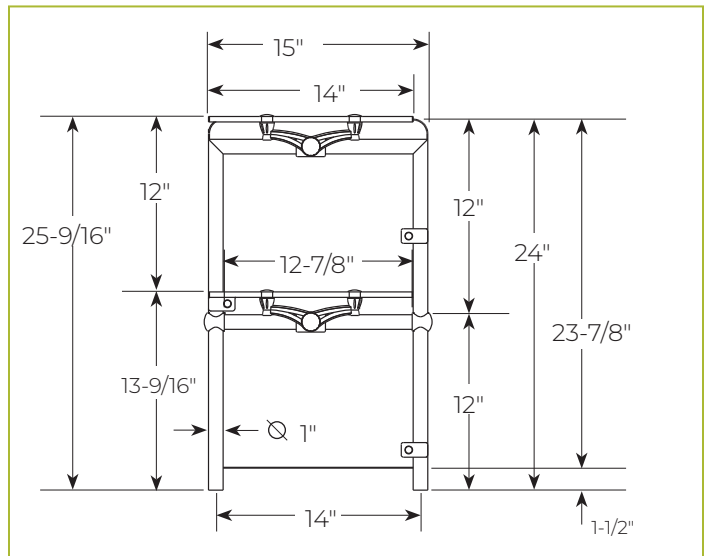
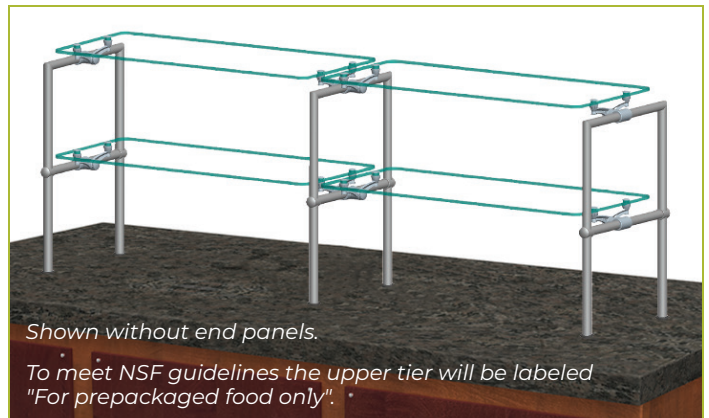
☐ MWU3: Narrow Flange

☐ MWU4: Compression Installation
(not recommended for solid surfaces)

☐ MWU5: Heavy-Duty Flange

XG3930-3

Two-Tier Display Shelf



To meet NSF guidelines, end panels are included on all BSI quotations unless specifically excluded. (See End Panel Page for More Details.)

GENERAL INFORMATION

Project Name: _____

STANDARD NSF LISTED FINISH OPTIONS

- ☐ Brushed Aluminum
- ☐ Chrome
- ☐ Gloss Black
- ☐ Wrinkle Black
- ☐ Smoked Copper
- ☐ Polished Brass Finish
- ☐ Other _____

GLASS THICKNESS

- ☐ 1/4" Tempered Glass (not for shelves)
Centerline Max 54"
- ☐ 3/8" Tempered Glass (for shelf or span more than 54") Centerline Max 66"
- ☐ 1/2" Tempered Glass (for shelf or span more than 66") Centerline Max 72"

GLASS CORNERS

- ☐ 1" Radius Corner (standard)
- ☐ Square Corners

LIGHT OPTIONS

- ☐ 2580 Slimline LED Light
- ☐ 790 Stealth Warmer
- ☐ 705 Stealth Light & Warmer
- ☐ 500 Stealth Heat/Light/Heat Combo

All BSI light and warmer units are UL Listed. See light spec sheets for detailed information. Also available with other manufacturers' light units. Contact BSI for details.

INSTALLATION OPTIONS

Above Counter: Stainless Steel Counter

Under Counter: Stainless Steel Counter

(Requires Under Counter Reinforcement & Access)

Above-Counter: Millwork Counter

Under-Counter: Millwork Counter

☐ SS1: EZ Mount 2" x 8" Flange

☐ SSU3-H: Heavy-Duty Flange

☐ SSU3-N: Narrow Flange

☐ SSU5-H: Heavy-Duty Flange

☐ SSU5-N: Narrow Flange

☐ MW1: Heavy-Duty Flange

☐ MW2: Narrow Flange

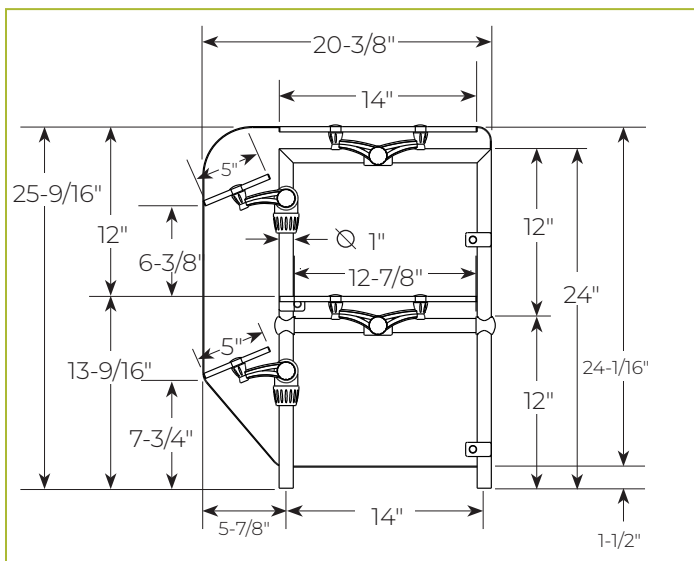
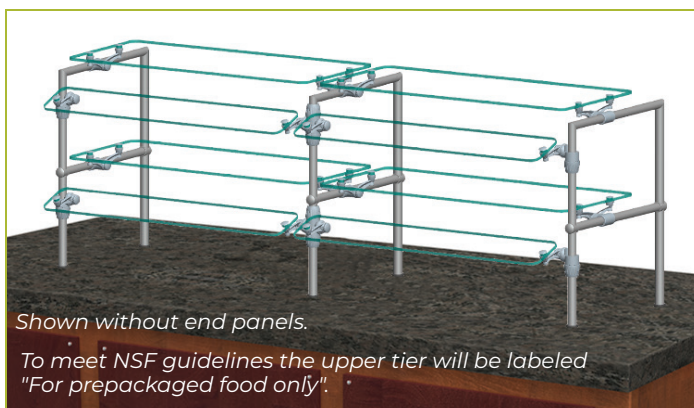
☐ MWU3: Narrow Flange

☐ MWU4: Compression Installation
(not recommended for solid surfaces)

☐ MWU5: Heavy-Duty Flange

XG3930-5

Two-Tier Display w/ Adjustable Guard



To meet NSF guidelines, end panels are included on all BSI quotations unless specifically excluded. (See End Panel Page for More Details.)

GENERAL INFORMATION

Project Name: _____

STANDARD SPECIFICATIONS

- ☐ 1" Diameter Stainless Steel Posts
- ☐ 3/8" Clear Tempered Front Glass Panels (max. span 66")
- ☐ 3/8" Clear Tempered Glass Top Shelf (max. span 66")
- ☐ Max Center Line Post-to-Post Span = 78"
- ☐ 1/4" Clear Tempered Glass End Panels
- ☐ 1" Radius Glass Corners

OPTIONS AND ACCESSORIES

NSF-LISTED FINISH OPTIONS

- ☐ Brushed Aluminum
- ☐ Stainless Steel #8 (Chrome)
- ☐ Gloss Black
- ☐ Matte Black
- ☐ Prismatic Brass
- ☐ Wrinkle Black
- ☐ Statuary Bronze
- ☐ Smoked Copper
- ☐ Other _____

GLASS FINISHES

- ☐ Clear (Standard)
- ☐ Low Iron
- ☐ Frosted
- ☐ Frosted Logo/Imprint
- ☐ Pattern

GLASS CORNERS

- ☐ 1" Radius Corners (Standard)
- ☐ Square Corners

GLASS PANEL OPTIONS

- ☐ 1/4" Glass (max. span 54")
- ☐ 3/8" Glass (max. span 66") (Standard)
- ☐ 1/2" Glass (max. span 72")

INSTALLATION OPTIONS

Above Counter: Stainless Steel Counter

Under Counter: Stainless Steel Counter

(Requires Under-Counter Reinforcement & Access)

Above Counter: Millwork Counter

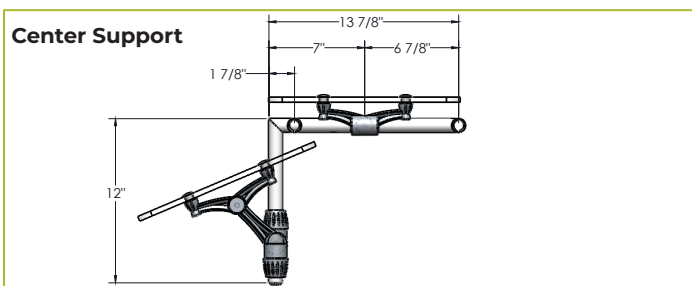
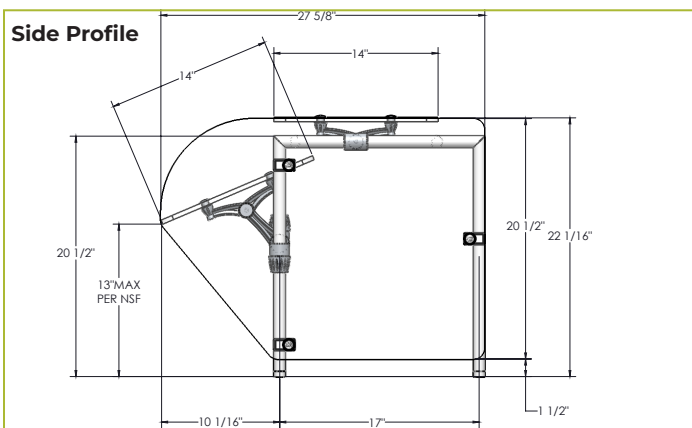
Under Counter: Millwork Counter

Approval Drawings Required
Specifications subject to change without notice.

XG3935 ClearSpan Single-Sided w/Top Shelf



To meet NSF guidelines, end panels are included on all BSI quotations unless specifically excluded. (See end panel page for more details.)



LIGHT AND WARMER OPTIONS

Model #	Description
<input type="checkbox"/> 2580	Slimline LED Light
<input type="checkbox"/> 790	Stealth Warmer
<input type="checkbox"/> 705	Stealth Light & Warmer
<input type="checkbox"/> 500	Stealth Heat/Light/Heat Combo

All BSI light and warmer units are UL Listed. See light and warmer spec sheets for detailed information. Xcex is also available with other manufacturers' heat and light units. Contact BSI for details.

- ☐ SS1: EZ Mount 2" x 8" Flange
- ☐ SSU3-H: Heavy-Duty Flange
- ☐ SSU5-H: Heavy-Duty Flange
- ☐ MW1: Heavy-Duty Flange
- ☐ MWU3: Narrow Flange
- ☐ MWU4: Compression Installation (not recommended for solid surfaces)
- ☐ SSU3-N: Narrow Flange
- ☐ SSU5-N: Narrow Flange
- ☐ MW2: Narrow Flange
- ☐ MWU5: Heavy-Duty Flange



GENERAL INFORMATION

Project Name: _____

STANDARD NSF LISTED FINISH OPTIONS

- | | |
|---|--|
| <input type="checkbox"/> Brushed Aluminum | <input type="checkbox"/> Chrome |
| <input type="checkbox"/> Gloss Black | <input type="checkbox"/> Wrinkle Black |
| <input type="checkbox"/> Smoked Copper | <input type="checkbox"/> Polished Brass Finish |
| <input type="checkbox"/> Other _____ | |

GLASS THICKNESS

- ☐ 1/4" Tempered Glass (not for shelves)
Centerline Max 54"
- ☐ 3/8" Tempered Glass (for shelf or span more than 54") Centerline Max 66"
- ☐ 1/2" Tempered Glass (for shelf or span more than 66") Centerline Max 72"

GLASS CORNERS

- | | |
|---|---|
| <input type="checkbox"/> 1" Radius Corner
(standard) | <input type="checkbox"/> Square Corners |
|---|---|

LIGHT OPTIONS

- | | |
|-------------------------------|-------------------------------|
| <input type="checkbox"/> 2580 | Slimline LED Light |
| <input type="checkbox"/> 790 | Stealth Warmer |
| <input type="checkbox"/> 705 | Stealth Light & Warmer |
| <input type="checkbox"/> 500 | Stealth Heat/Light/Heat Combo |

All BSI light and warmer units are UL Listed. See light spec sheets for detailed information. Also available with other manufacturers' light units. Contact BSI for details.

INSTALLATION OPTIONS

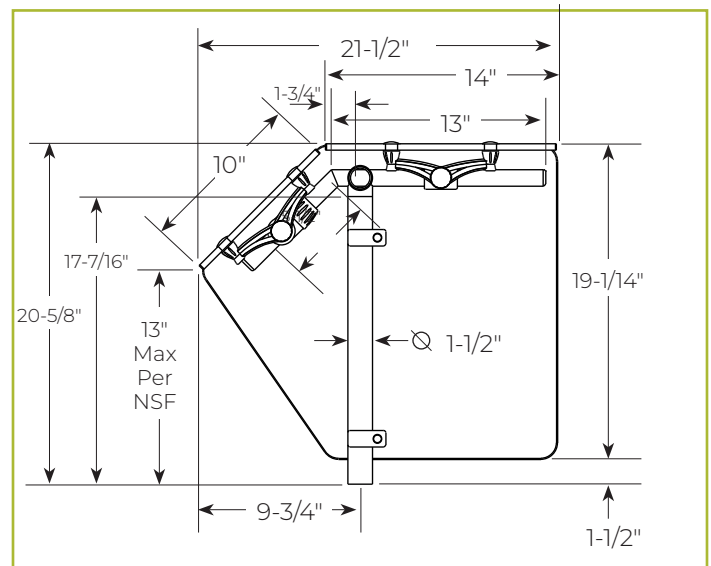
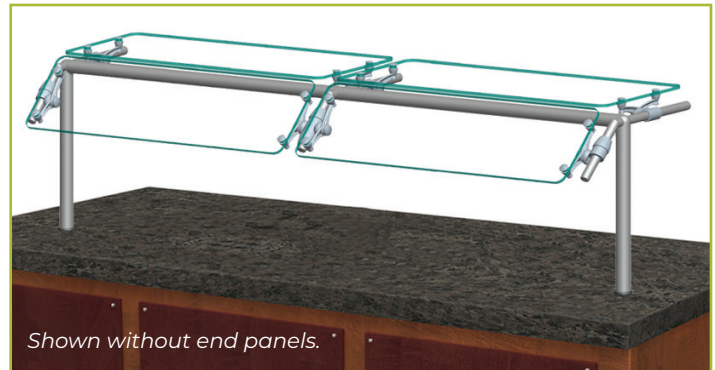
Above Counter

Under Counter

(Requires Under-Counter Reinforcement & Access)

- ☐ Surface Installation 720A/726A: Steel Post and Flange w/Flange Cover
- ☐ Surface Installation 725A: Cut Flange
- ☐ Under-Counter Installation 720A/726A: Steel Post and Flange w/Flange Cover or without Flange Cover
- ☐ Under-Counter Installation 725A: Narrow Custom Flange

XG3945 EZ Span



To meet NSF guidelines, end panels are included on all BSI quotations unless specifically excluded. (See End Panel Page for More Details.)

GENERAL INFORMATION

Project Name: _____

STANDARD NSF LISTED FINISH OPTIONS

- | | |
|---|--|
| <input type="checkbox"/> Brushed Aluminum | <input type="checkbox"/> Chrome |
| <input type="checkbox"/> Gloss Black | <input type="checkbox"/> Wrinkle Black |
| <input type="checkbox"/> Smoked Copper | <input type="checkbox"/> Polished Brass Finish |
| <input type="checkbox"/> Other _____ | |

GLASS THICKNESS

- ☐ 1/4" Tempered Glass (not for shelves)
Centerline Max 54"
- ☐ 3/8" Tempered Glass (for shelf or span more than 54") Centerline Max 66"
- ☐ 1/2" Tempered Glass (for shelf or span more than 66") Centerline Max 72"

Maximum span between legs on counter is recommended at 78".

GLASS CORNERS

- ☐ 1" Radius Corner (standard)
- ☐ Square Corners

LIGHT OPTIONS

- | | |
|-------------------------------|-------------------------------|
| <input type="checkbox"/> 2580 | Slimline LED Light |
| <input type="checkbox"/> 790 | Stealth Warmer |
| <input type="checkbox"/> 705 | Stealth Light & Warmer |
| <input type="checkbox"/> 500 | Stealth Heat/Light/Heat Combo |

All BSI light and warmer units are UL Listed. See light spec sheets for detailed information. Also available with other manufacturers' light units. Contact BSI for details.

INSTALLATION OPTIONS

Above Counter

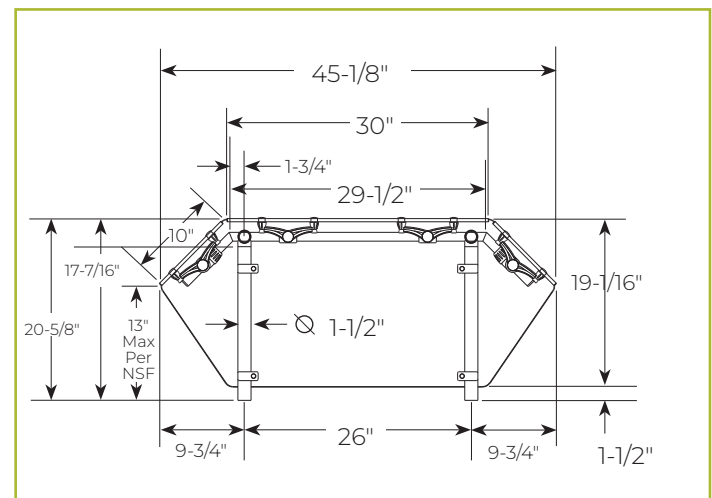
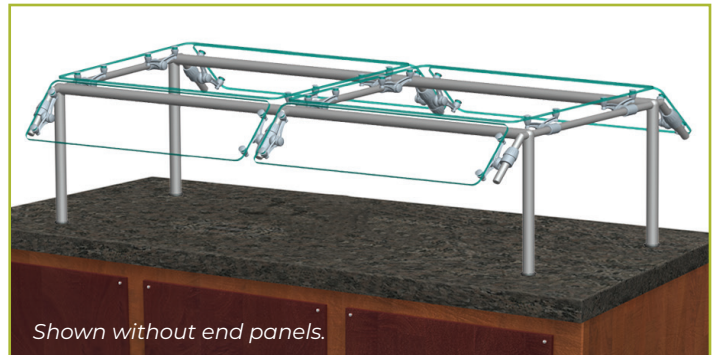
Under Counter

(Requires Under-Counter Reinforcement & Access)

- ☐ Surface Installation 720A/726A: Steel Post and Flange w/Flange Cover
- ☐ Surface Installation 725A: Cut Flange
- ☐ Under-Counter Installation 720A/726A: Steel Post and Flange w/Flange Cover or without Flange Cover
- ☐ Under-Counter Installation 725A: Narrow Custom Flange

XG3945-3

Double-Sided EZ Span



To meet NSF guidelines, end panels are included on all BSI quotations unless specifically excluded. (See End Panel Page for More Details.)

GENERAL INFORMATION

Project Name: _____

STANDARD NSF LISTED FINISH OPTIONS

- | | |
|---|--|
| <input type="checkbox"/> Brushed Aluminum | <input type="checkbox"/> Chrome |
| <input type="checkbox"/> Gloss Black | <input type="checkbox"/> Wrinkle Black |
| <input type="checkbox"/> Smoked Copper | <input type="checkbox"/> Polished Brass Finish |
| <input type="checkbox"/> Other _____ | |

GLASS THICKNESS

- ☐ 1/4" Tempered Glass (not for shelves)
Centerline Max 54"
- ☐ 3/8" Tempered Glass (for shelf or span more than 54") Centerline Max 66"
- ☐ 1/2" Tempered Glass (for shelf or span more than 66") Centerline Max 72"

Maximum span between legs on counter is recommended at 78".

GLASS CORNERS

- | | |
|--|---|
| <input type="checkbox"/> 1" Radius Corner (standard) | <input type="checkbox"/> Square Corners |
|--|---|

LIGHT OPTIONS

- | | |
|-------------------------------|-------------------------------|
| <input type="checkbox"/> 2580 | Slimline LED Light |
| <input type="checkbox"/> 790 | Stealth Warmer |
| <input type="checkbox"/> 705 | Stealth Light & Warmer |
| <input type="checkbox"/> 500 | Stealth Heat/Light/Heat Combo |

All BSI light and warmer units are UL Listed. See light spec sheets for detailed information. Also available with other manufacturers' light units. Contact BSI for details.

INSTALLATION OPTIONS

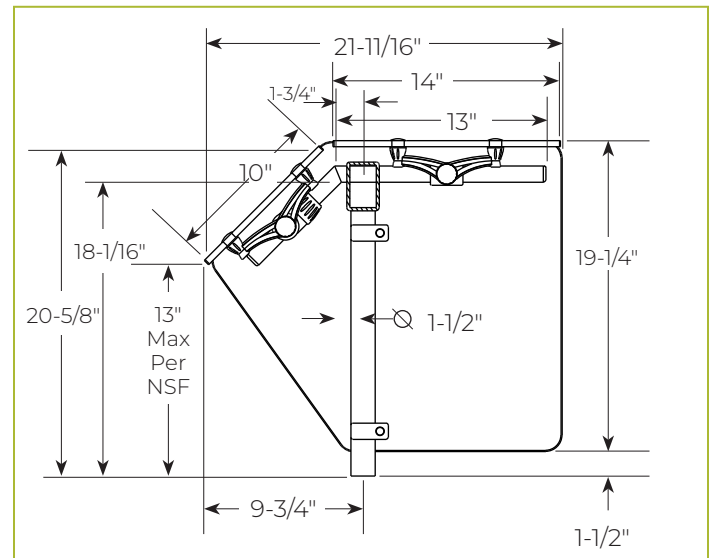
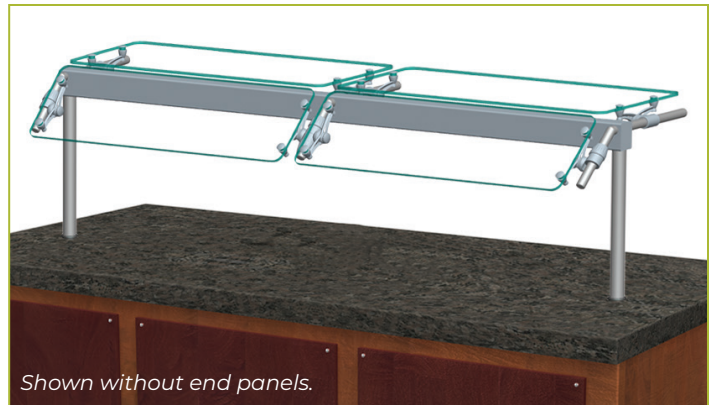
Above Counter

Under Counter

(Requires Under-Counter Reinforcement & Access)

- ☐ Surface Installation 720A/726A: Steel Post and Flange w/Flange Cover
- ☐ Surface Installation 725A: Cut Flange
- ☐ Under-Counter Installation 720A/726A: Steel Post and Flange w/Flange Cover or without Flange Cover
- ☐ Under-Counter Installation 725A: Narrow Custom Flange

XG3950 Mega Span



To meet NSF guidelines, end panels are included on all BSI quotations unless specifically excluded. (See End Panel Page for More Details.)

GENERAL INFORMATION

Project Name: _____

STANDARD NSF LISTED FINISH OPTIONS

- | | |
|---|--|
| <input type="checkbox"/> Brushed Aluminum | <input type="checkbox"/> Chrome |
| <input type="checkbox"/> Gloss Black | <input type="checkbox"/> Wrinkle Black |
| <input type="checkbox"/> Smoked Copper | <input type="checkbox"/> Polished Brass Finish |
| <input type="checkbox"/> Other _____ | |

GLASS THICKNESS

- ☐ 1/4" Tempered Glass (not for shelves)
Centerline Max 54"
- ☐ 3/8" Tempered Glass (for shelf or span more than 54") Centerline Max 66"
- ☐ 1/2" Tempered Glass (for shelf or span more than 66") Centerline Max 72"

Maximum span between legs on counter is recommended at 78".

GLASS CORNERS

- ☐ 1" Radius Corner (standard)
- ☐ Square Corners

LIGHT OPTIONS

- | | |
|-------------------------------|-------------------------------|
| <input type="checkbox"/> 2580 | Slimline LED Light |
| <input type="checkbox"/> 790 | Stealth Warmer |
| <input type="checkbox"/> 705 | Stealth Light & Warmer |
| <input type="checkbox"/> 500 | Stealth Heat/Light/Heat Combo |

All BSI light and warmer units are UL Listed. See light spec sheets for detailed information. Also available with other manufacturers' light units. Contact BSI for details.

INSTALLATION OPTIONS

Above Counter

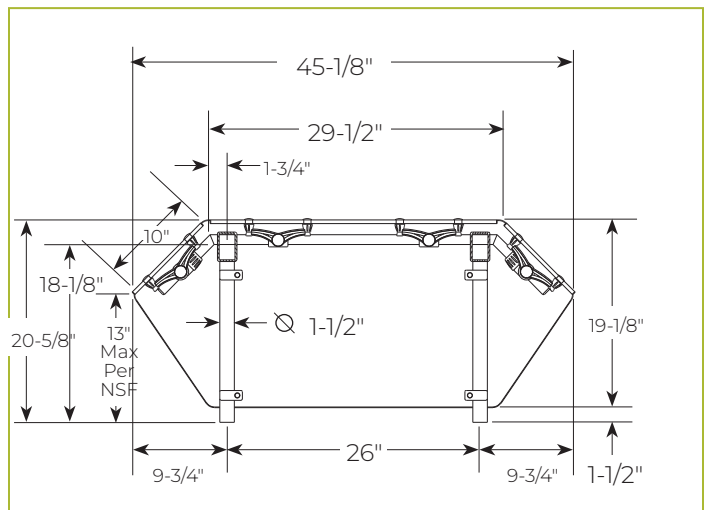
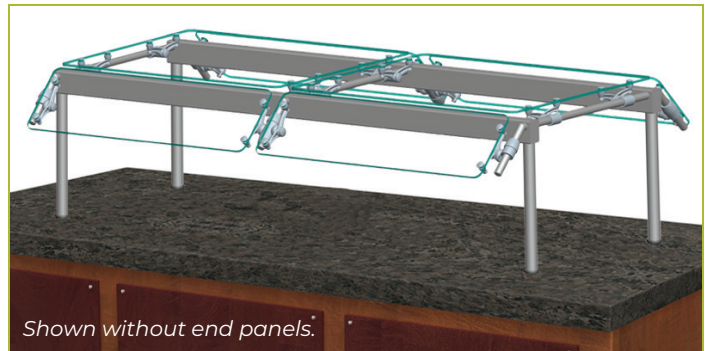
Under Counter

(Requires Under-Counter Reinforcement & Access)

- ☐ Surface Installation 720A/726A: Steel Post and Flange w/Flange Cover
- ☐ Surface Installation 725A: Cut Flange
- ☐ Under-Counter Installation 720A/726A: Steel Post and Flange w/Flange Cover or without Flange Cover
- ☐ Under-Counter Installation 725A: Narrow Custom Flange

XG3950-2

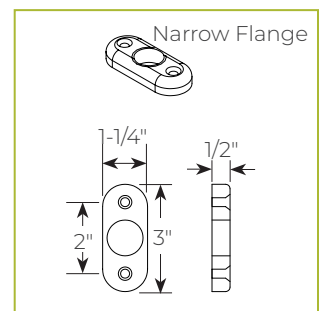
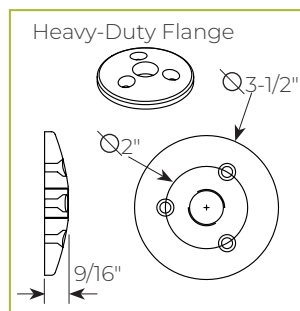
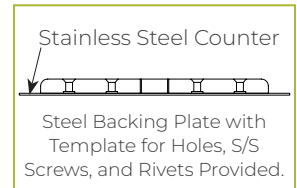
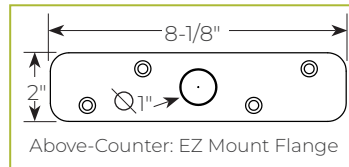
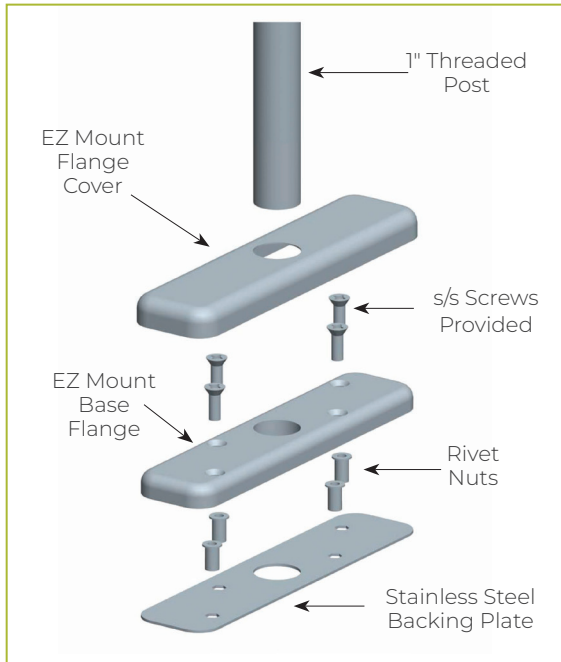
Double-Sided Mega Span



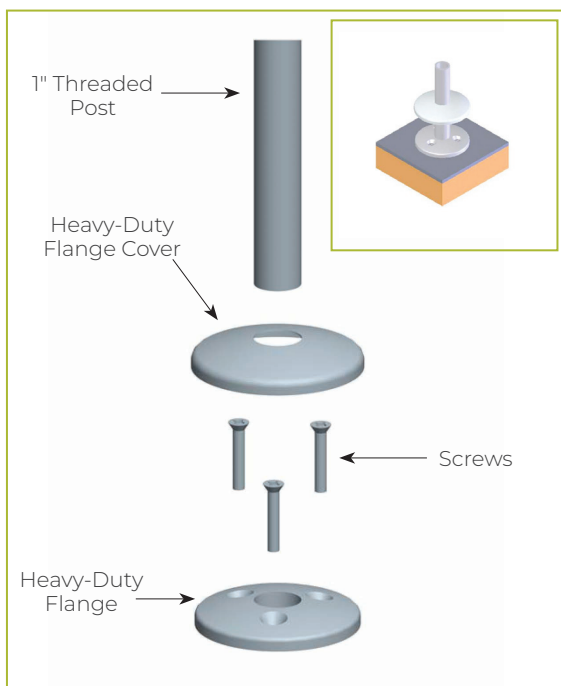
To meet NSF guidelines, end panels are included on all BSI quotations unless specifically excluded. (See End Panel Page for More Details.)

ABOVE-COUNTER INSTALLATION FOR 1" XGUARD POSTS

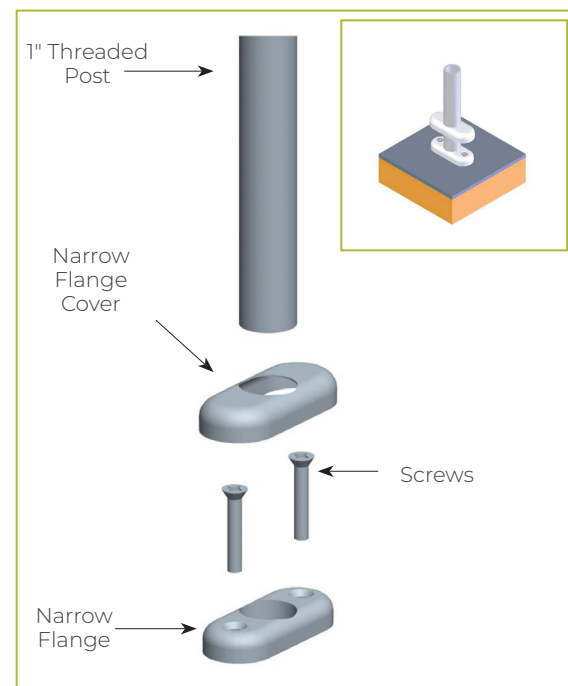
For Stainless Steel Counter SS1: EZ Mount 2" x 8" Flange



For Millwork Counter MW1: Heavy-Duty Flange

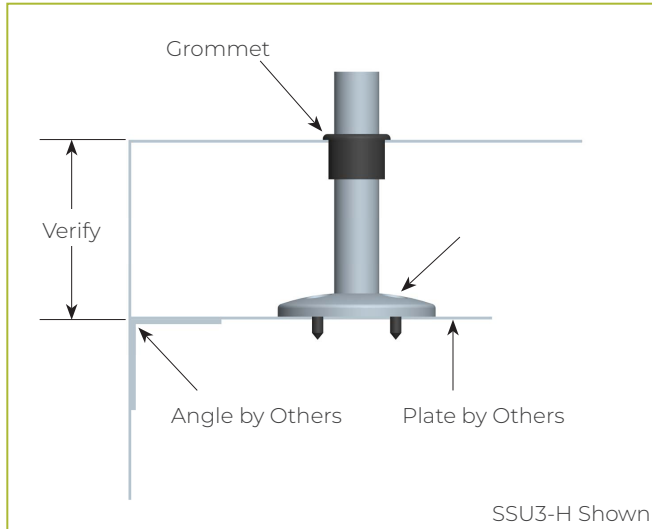


For Millwork Counter MW2: Narrow Flange

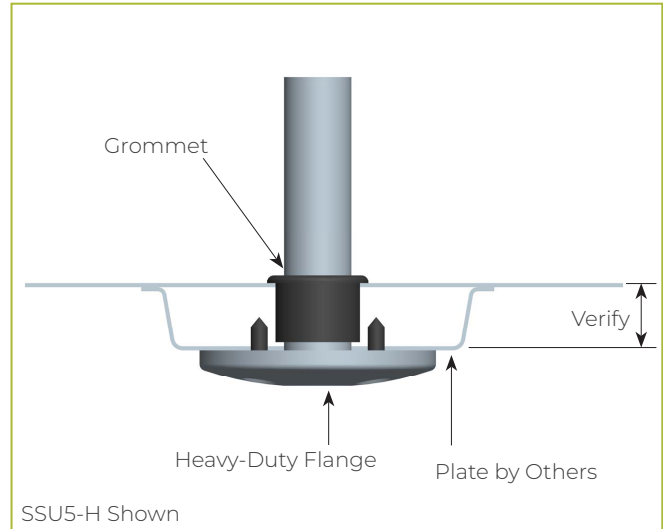


UNDER-COUNTER INSTALLATION FOR 1" XGUARD POSTS

**For Stainless Steel Counter
(requires under-counter reinforcement
and access)**

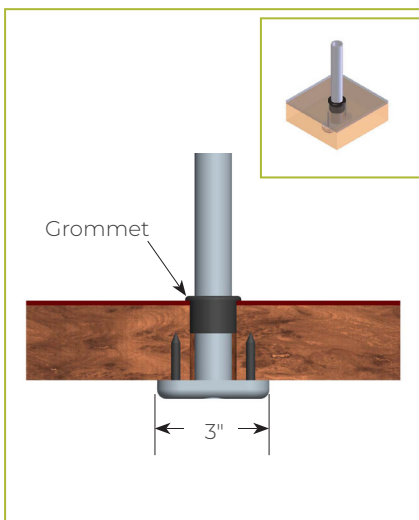


**For Stainless Steel Counter
(requires under-counter reinforcement
and access)**

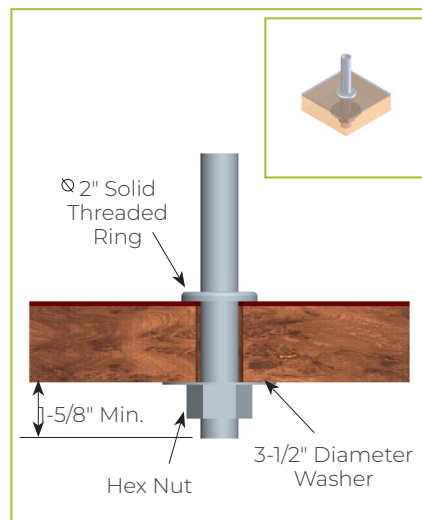


Verify Counter Thickness or Under-Counter Installation Depth in Inches

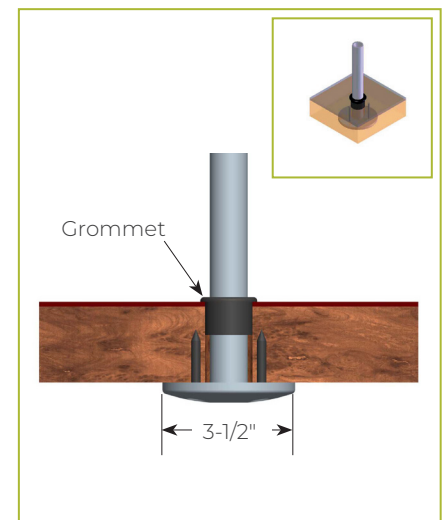
**For Millwork Counter
MWU3: Narrow Flange**



**For Millwork Counter
MWU4: Compression Installation
(not recommended for solid
surfaces)**



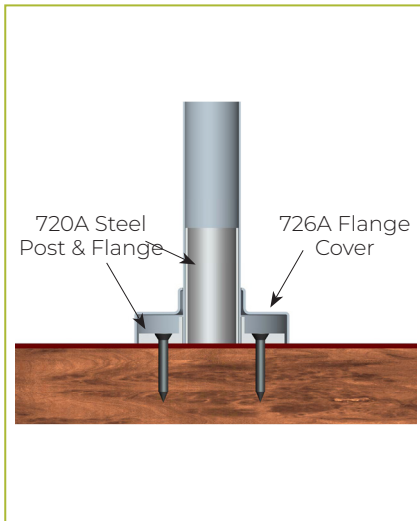
**For Millwork Counter
MWU5: Heavy-Duty Flange**



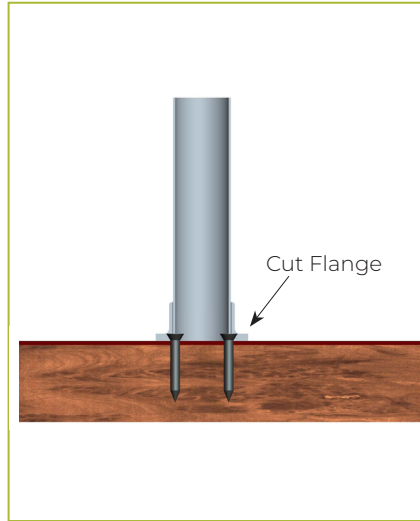
Verify Counter Thickness or Under-Counter Installation Depth in Inches

ABOVE-COUNTER INSTALLATION FOR 1-1/2" XGUARD POSTS

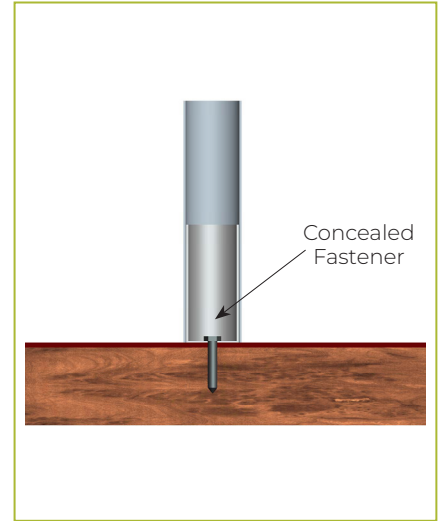
For Millwork Counter Surface Installation 720A/726A:
Steel Post and Flange
w/Flange Cover



For Millwork Counter Surface Installation 725A:
Cut Flange



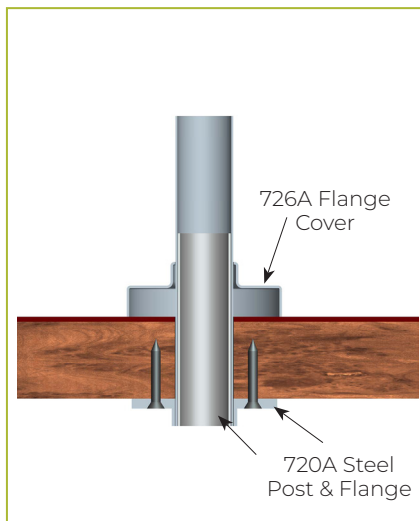
For Millwork Counter Concealed Fastener
(not for cantilever units)



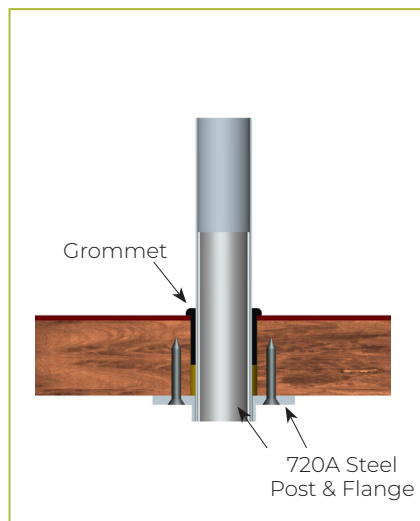
UNDER-COUNTER INSTALLATION FOR 1-1/2" XGUARD POSTS

(requires under-counter reinforcement and access)

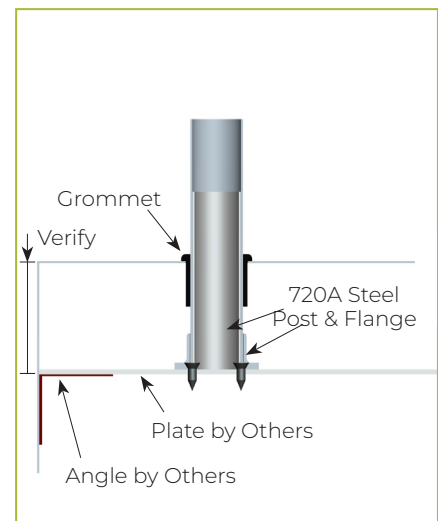
Under-Counter Installation 720A/726A:
Steel Post and Flange w/
Flange Cover



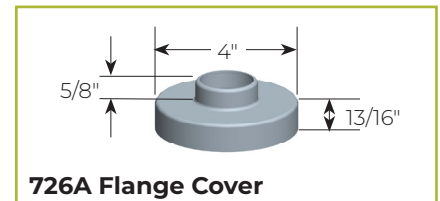
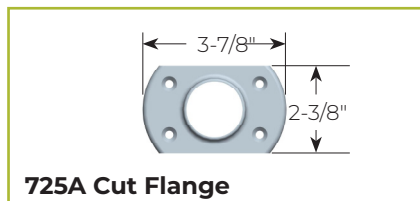
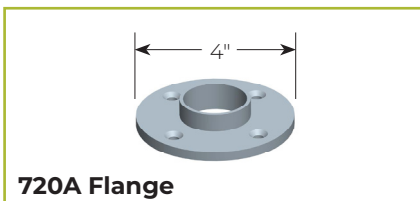
Under-Counter Installation 720A:
Steel Post and Flange w/out
Flange Cover



Under-Counter Installation 725A:
Narrow Custom Flange



FLANGE AND FLANGE COVER DIMENSIONS

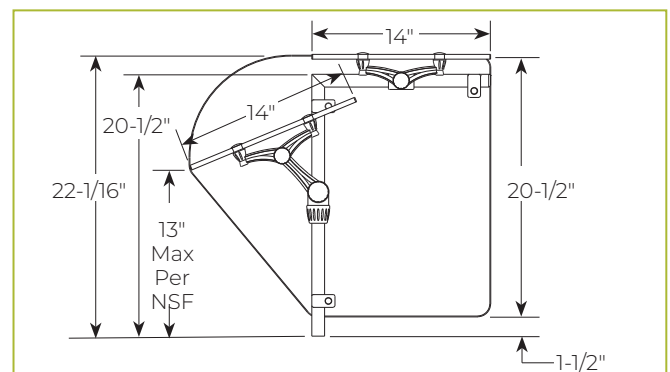
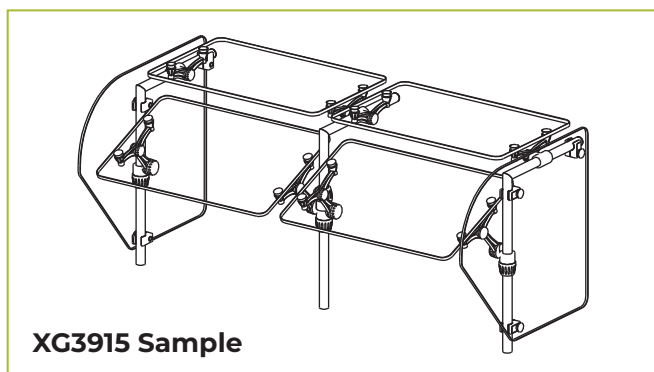
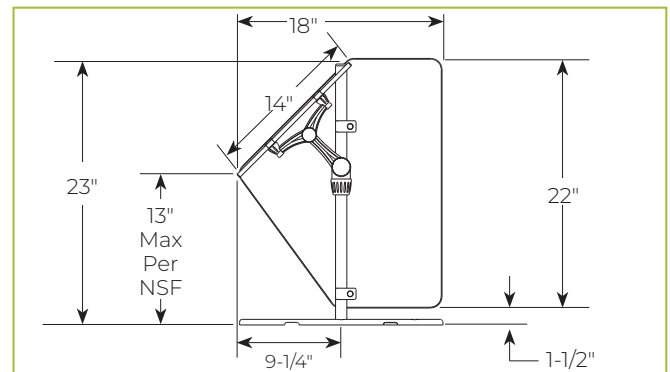
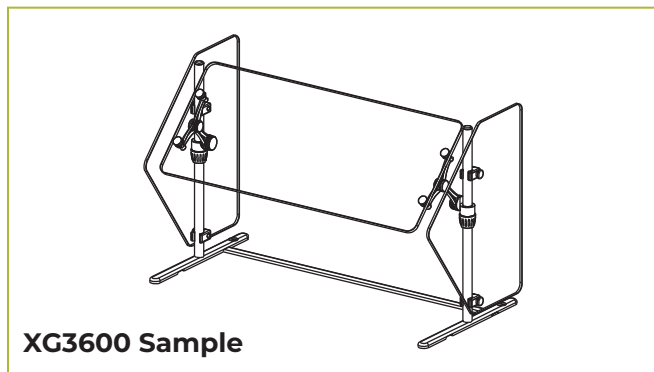
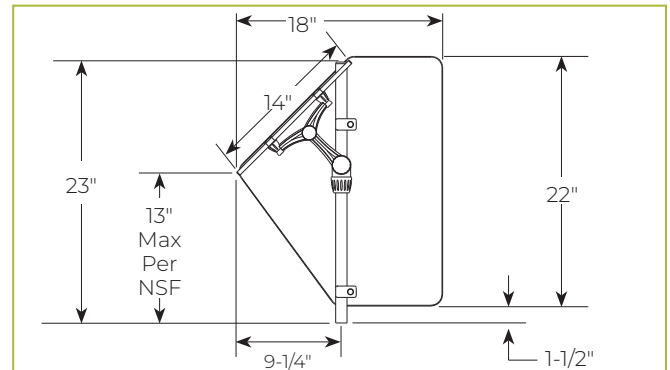
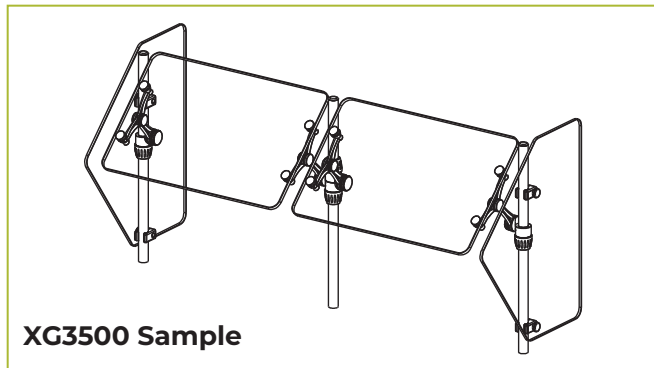


Specifications subject to change without notice.

03.25

END PANELS

To meet NSF guidelines, end panels are included on all BSI quotations unless specifically excluded. The following section shows size and location of glass end panels for select XGuard models. For end panel information relating to additional models please contact the BSI factory at 1.800.622.9595.



END PANELS

To meet NSF guidelines, end panels are included on all BSI quotations unless specifically excluded. The following section shows size and location of glass end panels for select XGuard models. For end panel information relating to additional models please contact the BSI factory at 1.800.622.9595.

